



MATTHEW SCHMID ARCHITECTURE

1000052392 Ontario Inc.

PROJECT: MUSIC CITY HOTEL

1000052392 Ontario Inc.

Niagara Falls, ON

DATE: 02/20/2026

PROJECT NO: Z309

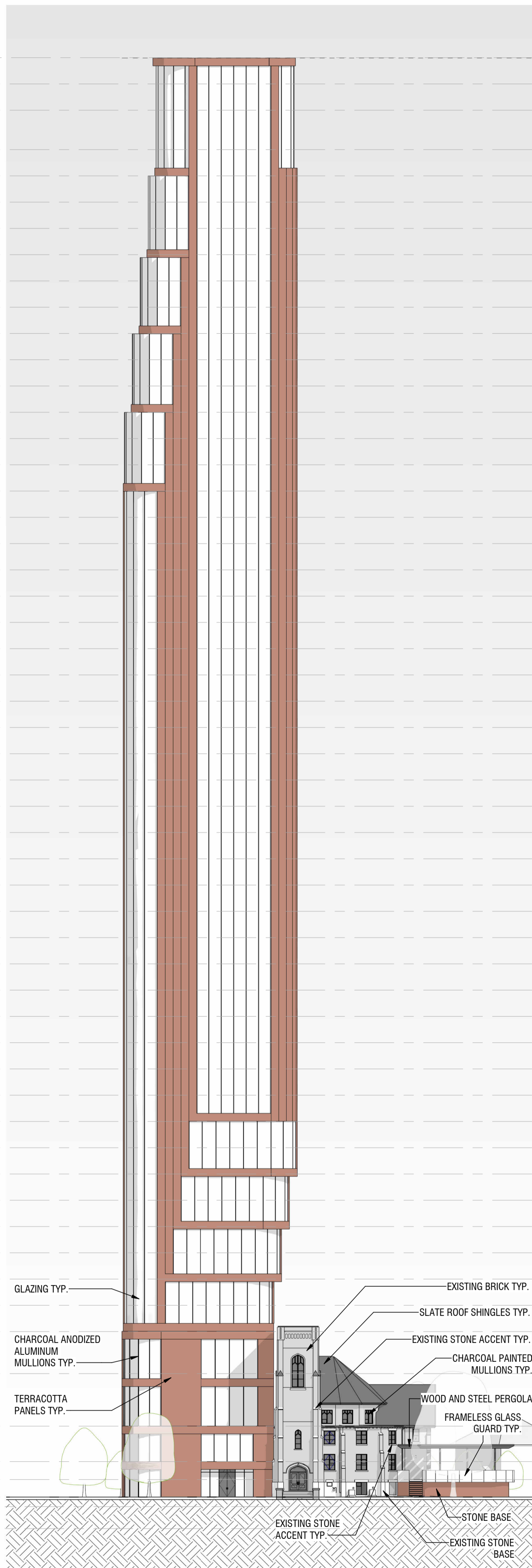
REVISION: DATE

DRAFT ZBA/OFA 02/20/2026

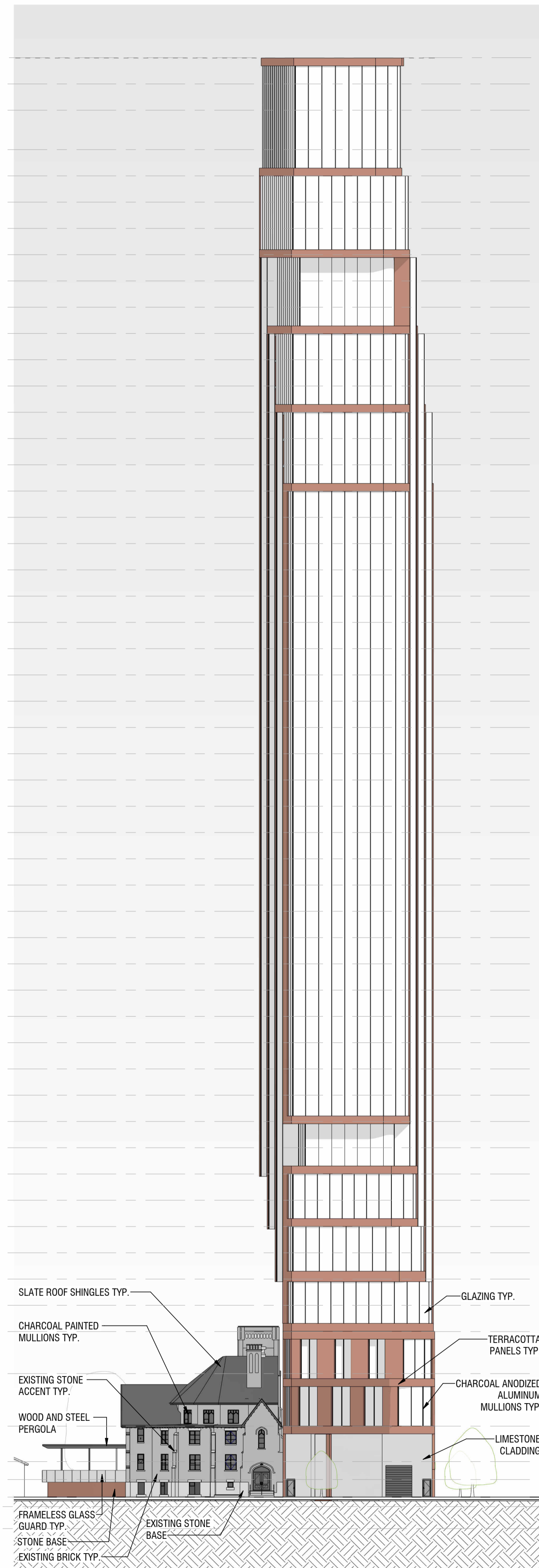
ZBA/OFA 03/20/2026

NOTES:

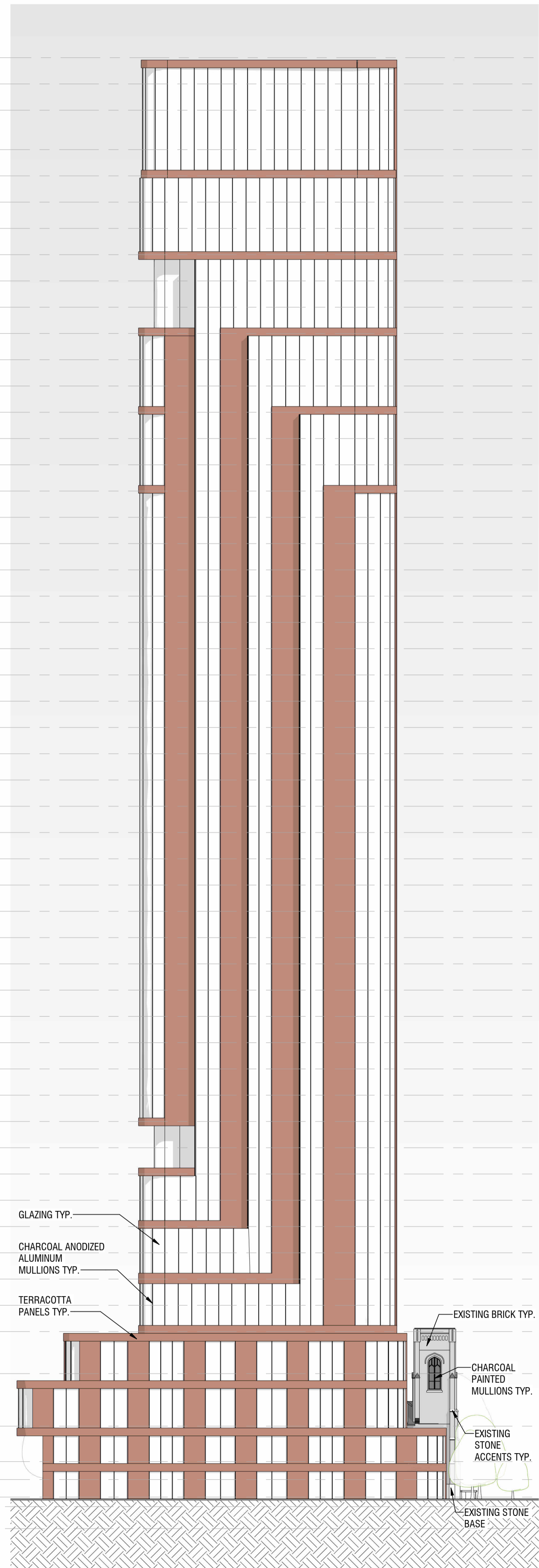
NOT FOR CONSTRUCTION



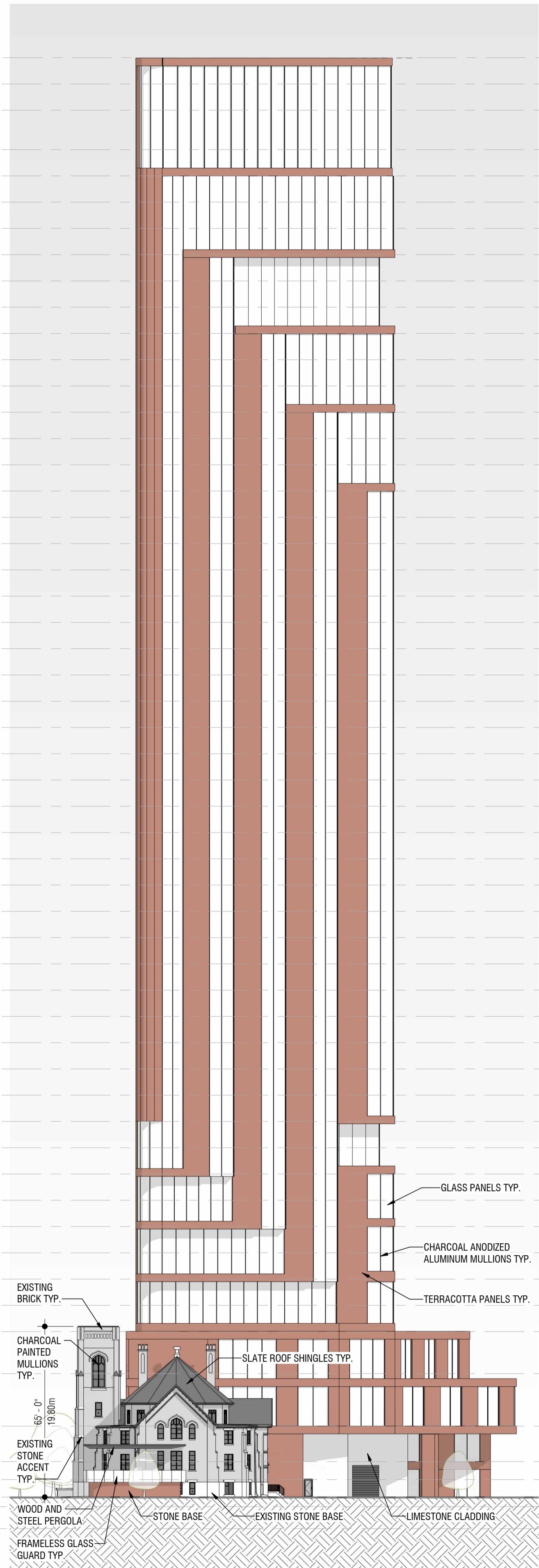
1 North SCALE: 1" = 30'-0"



2 South SCALE: 1" = 30'-0"



3 East SCALE: 1" = 30'-0"



4 West SCALE: 1" = 30'-0"

- ROOF +648'-0" (167.03 m)
- LEVEL 52 +538'-0" (163.98 m)
- LEVEL 51 +528'-0" (160.93 m)
- LEVEL 50 +513'-0" (156.36 m)
- LEVEL 49 +503'-0" (153.31 m)
- LEVEL 48 +493'-0" (150.27 m)
- LEVEL 47 +483'-0" (147.22 m)
- LEVEL 46 +473'-0" (144.17 m)
- LEVEL 45 +463'-0" (141.12 m)
- LEVEL 44 +453'-0" (138.07 m)
- LEVEL 43 +443'-0" (135.03 m)
- LEVEL 42 +433'-0" (131.98 m)
- LEVEL 41 +423'-0" (128.93 m)
- LEVEL 40 +413'-0" (125.88 m)
- LEVEL 39 +403'-0" (122.83 m)
- LEVEL 38 +393'-0" (119.79 m)
- LEVEL 37 +383'-0" (116.74 m)
- LEVEL 36 +373'-0" (113.69 m)
- LEVEL 35 +363'-0" (110.64 m)
- LEVEL 34 +353'-0" (107.59 m)
- LEVEL 33 +343'-0" (104.55 m)
- LEVEL 32 +333'-0" (101.50 m)
- LEVEL 31 +323'-0" (98.45 m)
- LEVEL 30 +313'-0" (95.40 m)
- LEVEL 29 +303'-0" (92.35 m)
- LEVEL 28 +293'-0" (89.31 m)
- LEVEL 27 +283'-0" (86.26 m)
- LEVEL 26 +273'-0" (83.21 m)
- LEVEL 25 +263'-0" (80.16 m)
- LEVEL 24 +253'-0" (77.11 m)
- LEVEL 23 +243'-0" (74.07 m)
- LEVEL 22 +233'-0" (71.02 m)
- LEVEL 21 +223'-0" (67.97 m)
- LEVEL 20 +213'-0" (64.92 m)
- LEVEL 19 +203'-0" (61.87 m)
- LEVEL 18 +193'-0" (58.83 m)
- LEVEL 17 +183'-0" (55.78 m)
- LEVEL 16 +173'-0" (52.73 m)
- LEVEL 15 +163'-0" (49.68 m)
- LEVEL 14 +153'-0" (46.63 m)
- LEVEL 13 +143'-0" (43.59 m)
- LEVEL 12 +133'-0" (40.54 m)
- LEVEL 11 +123'-0" (37.49 m)
- LEVEL 10 +113'-0" (34.44 m)
- LEVEL 9 +103'-0" (31.39 m)
- LEVEL 8 +93'-0" (28.35 m)
- LEVEL 7 +83'-0" (25.30 m)
- LEVEL 6 +73'-0" (22.25 m)
- LEVEL 5 +63'-0" (19.20 m)
- LEVEL 4 +47'-0" (14.33 m)
- LEVEL 3 +27'-0" (8.23 m)
- LEVEL 2 +13'-0" (4.11 m)
- MUSIC HALL LEVEL +8'-8" (2.03 m)
- LEVEL 1 +0'-0" (0.00 m)
- MUSIC HALL BASEMENT -3'-7 11/16" (-1.11 m)
- BASEMENT -12'-0" (-3.66 m)

BUILDING ELEVATIONS

SCALE: 1" = 30'-0"

A300

DRAWN BY: