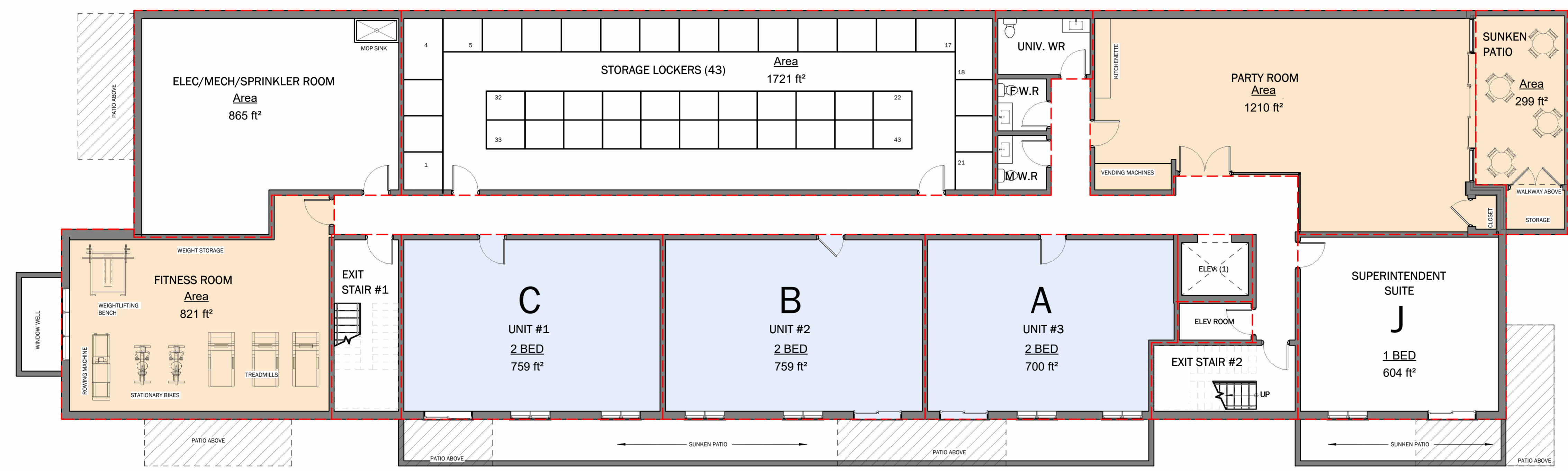


PARKING	
PARKING SPACES:	47
SUITES	
1 BEDROOM	6 UNITS
2 BEDROOM	36 UNITS
SUPER INTENDENT SUITE	1 UNIT
TOTAL	43 UNITS

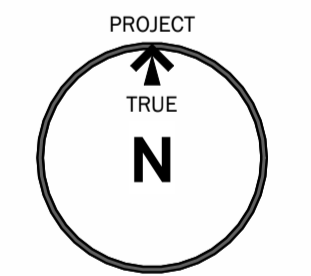


BASEMENT
 1 : 100
8,930 SQ.FT
 3 UNIT

ALL CONTRACTORS AND/OR TRADES SHALL VERIFY ALL DIMENSIONS, NOTES, SITE AND REPORT ANY DISCREPANCIES PRIOR TO COMMENCEMENT OF THE WORK. THIS DRAWING NOT TO BE SCALED. ALL DRAWINGS, PRINTS AND RELATED DOCUMENTS ARE THE PROPERTY OF THE ARCHITECT AND MUST BE RETURNED UPON REQUEST. REPRODUCTION OF DRAWINGS AND RELATED DOCUMENTS IN PART OR IN WHOLE IS STRICTLY FORBIDDEN WITHOUT WRITTEN CONSENT. DRAWINGS TO BE FOR THE PURPOSE FOR WHICH THEY ARE ISSUED.

No.	DATE	DESCRIPTION	BY:
1	OCT 10 2025	PRE-CON SUBMISSION	JC
2	NOV 20 2025	REVISED SITE PLAN	JC
3	NOV 26 2025	REVISED CONCEPT PACKAGE	JC/BT
4	DEC 19 2025	ZBA/OPA SUBMISSION #1	JC

COMMISSION:
B + H RENTALS
 5558 DRUMMOND ROAD
 NIAGARA FALLS, ONTARIO, L2G 4L3



A · C · K
 architects
 STUDIO INC.

Architectural Office:
 290 Glendale Ave. St. Catharines, ON, L2T 2L3
 905 984 5545

SHEET TITLE:
**BASEMENT FLOOR
 PLATE**

DRAWN BY:	BT/JC	DRAWING No.:	A.0
CHECKED BY:	MA		
DATE ISSUED:	NOV 26 2025		
PROJECT No.:	2025-140		



GROUND FLOOR
 1 : 100 **8.930 SQ.FT**
 9 UNITS

PARKING	
PARKING SPACES:	47
SUITES	
1 BEDROOM	6 UNITS
2 BEDROOM	36 UNITS
SUPER INTENDENT SUITE	1 UNIT
TOTAL	43 UNITS

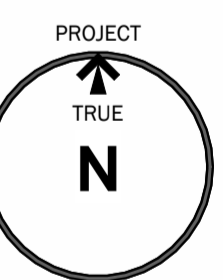
ALL CONTRACTORS AND/OR TRADES SHALL VERIFY ALL DIMENSIONS, NOTES, SITE AND REPORT ANY DISCREPANCIES PRIOR TO COMMENCEMENT OF THE WORK. THIS DRAWING NOT TO BE SCALED. ALL DRAWINGS, PRINTS AND RELATED DOCUMENTS ARE THE PROPERTY OF THE ARCHITECT AND MUST BE RETURNED UPON REQUEST. REPRODUCTION OF DRAWINGS AND RELATED DOCUMENTS IN PART OR IN WHOLE IS STRICTLY FORBIDDEN WITHOUT WRITTEN CONSENT. DRAWINGS TO BE FOR THE PURPOSE FOR WHICH THEY ARE ISSUED.

No.	DATE	DESCRIPTION	BY:
1	OCT 10 2025	PRE-CON SUBMISSION	JC
2	NOV 20 2025	REVISED SITE PLAN	JC
3	NOV 26 2025	REVISED CONCEPT PACKAGE	JC/BT
4	DEC 19 2025	ZBA/OPA SUBMISSION #1	JC

COMMISSION:

B + H RENTALS

5558 DRUMMOND ROAD
 NIAGARA FALLS, ONTARIO, L2G 4L3



A · C · K
 architects
 STUDIO INC.

Architectural Office:
 290 Glendale Ave. St. Catharines, ON, L2T 2L3
 905 984 5545

SHEET TITLE:

FIRST FLOOR

DRAWN BY:	BT/JC	DRAWING No.:	A.1
CHECKED BY:	MA		
DATE ISSUED:	NOV 26 2025		
PROJECT No.:	2025-140		



2ND -4TH FLOOR PLATE
 1 : 100 **8.845 SQ.FT**
 10 UNITS

PARKING	
PARKING SPACES:	47
SUITES	
1 BEDROOM	6 UNITS
2 BEDROOM	36 UNITS
SUPER INTENDENT SUITE	1 UNIT
TOTAL	43 UNITS

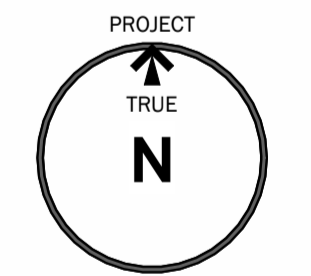
ALL CONTRACTORS AND/OR TRADES SHALL VERIFY ALL DIMENSIONS, NOTES, SITE AND REPORT ANY DISCREPANCIES PRIOR TO COMMENCEMENT OF THE WORK. THIS DRAWING NOT TO BE SCALED. ALL DRAWINGS, PRINTS AND RELATED DOCUMENTS ARE THE PROPERTY OF THE ARCHITECT AND MUST BE RETURNED UPON REQUEST. REPRODUCTION OF DRAWINGS AND RELATED DOCUMENTS IN PART OR IN WHOLE IS STRICTLY FORBIDDEN WITHOUT WRITTEN CONSENT. DRAWINGS TO BE FOR THE PURPOSE FOR WHICH THEY ARE ISSUED.

No.	DATE	DESCRIPTION	BY:
1	OCT 10 2025	PRE-CON SUBMISSION	JC
2	NOV 20 2025	REVISED SITE PLAN	JC
3	NOV 26 2025	REVISED CONCEPT PACKAGE	JC/BT
4	DEC 19 2025	ZBA/OPA SUBMISSION #1	JC

COMMISSION:

B + H RENTALS

5558 DRUMMOND ROAD
 NIAGARA FALLS, ONTARIO, L2G 4L3



A · C · K
 architects
 STUDIO INC.

Architectural Office:
 290 Glendale Ave. St. Catharines, ON, L2T 2L3
 905 984 5545

SHEET TITLE:

2ND -4TH FLOOR PLATE

DRAWN BY:	BT/JC	DRAWING No.:	A.2
CHECKED BY:	MA		
DATE ISSUED:	NOV 26 2025		
PROJECT No.:	2025-140		